

ASTEL
LIGHTING

ASTEL
LIGHTING

ASTEL
LIGHTING

METEOR^{xp}

ASTEL
LIGHTING

UNDERWATER POOL LED LIGHTING

2020

METEOR





The **ASTEL LIGHTING** brand name was launched in 2009 as the result of very well accepted underwater marine lighting products fitted in luxury yachts.

The **METEOR** series of the new and world's first compact ultra-thin LED underwater pool light with built-in driver is designed to use the latest LED lighting technology.

The main feature is that **METEOR** lights can be installed on a flat surface without any surface preparation during construction. For other installations and replacements the special adapters are available.

The multi-color versions of **METEOR** series allow changing the color of lighting manually or automatically through the complete rainbow spectrum.

The **METEOR XP** series of the new extremely powerfull LED lights is basically designed for installation in large pools. The special designed niches allow standard installations in pools using different materials and finishes.

All the models are designed with stainless-steel casings.

Table Of Contents

UNDERWATER POOL LED LIGHTS	4
METEOR LSR0640	4
METEOR LSR1280	6
METEOR LSR36240	8
METEOR LSR36500	10
METEOR XP LSR3210	12
METEOR XP LSR3215	12
ACCESSORIES	14
PAR56 Adapter LPAR56	14
Surface Mount Niche LSMN0640	16
Surface Mount Niche LSMN1280	16
Surface Mount Niche LSMN36240	16
Surface Mount Niche LSMN36500	16
Surface Mount Right-Angle Niche LRMN0640	18
Surface Mount Right-Angle Niche LRMN1280	18
Surface Mount Right-Angle Niche LRMN36240	18
Surface Mount Right-Angle Niche LRMN36500	18
Surface-Mount Right-Angle Niche Accessory LSB0640	18
Surface-Mount Right-Angle Niche Accessory LSB1280	18
Surface-Mount Right-Angle Niche Accessory LSB36240	18
Surface-Mount Right-Angle Niche Accessory LSB36500	18
Concrete Pool Niche LCPN0640	20
Concrete Pool Niche LCPN1280	20
Concrete Pool Niche LCPN36240	20
Concrete Pool Niche LCFN0640	22
Concrete Pool Niche LCFN1280	22
Concrete Pool Niche LCFN36240	22
Liner Pool Niche LLPN0640	24
Liner Pool Niche LLPN1280	24
Liner Pool Niche LLPN36240	24
Liner Pool Niche LLPN36500	24
Liner / Stainless Steel Pool Niche Accessory LLS0640	26
Liner / Stainless Steel Pool Niche Accessory LLS1280	26
Liner / Stainless Steel Pool Niche Accessory LLS36240	26
Liner Pool Niche Accessory LLR0640	26
Liner Pool Niche Accessory LLR1280	26
Liner Pool Niche Accessory LLR36240	26
Liner Pool Niche Accessory LLR36500	26
Gasket LSG0640	27
Gasket LSG1280	27
Gasket LSG36240	27
O-Ring Set LS00640	27
O-Ring Set LS01280	27
O-Ring Set LS036240	27
Concrete Pool Niche LCPNXP32	28
Liner Pool Niche LLPNXP32	30
Liner Pool Niche LLGNXP32	32
Synchronization Unit LSU08	34
PWM Dimmer LDU13	34
DMX512 Interface LXU01	35



Underwater Pool LED Lights

Ultra-thin compact surface-mount design.

Single-color light control by using optional momentary switch or optional DMX512 interface LXU01 and PWM dimmer LDU13 with built-in ASTEL protocol.

Multi-color light control with dimming and changing of color of lighting manually or automatically through the complete rainbow spectrum by using optional momentary switch or optional DMX512 interface LXU01 with built-in ASTEL protocol.



- Stainless-Steel Casing
- 6 Power LEDs Design
- Cool White, Warm White, Blue, Green and Multi-Color Lighting
- High Grade Polycarbonate Glass Optical Window
- Vacuum Metalized Reflector
- Remote Control
- Microprocessor Control (network)
- Digital Dimming
- Polarity Protection
- Transient Protection
- Thermal Protection
- Low Power Consumption
- Simple Installation

METEOR LSR0640

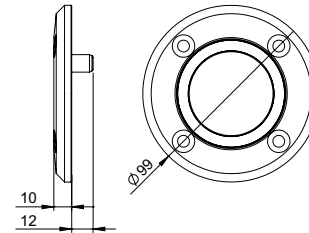
Power supply	12–24 Vdc, max. 680 mA/12 Vdc or 380 mA/24 Vdc
Beam angle	60° (standard) or 100° (wide)
Optical window	High-grade polycarbonate glass
Luminous flux	max. 950 lm (cool white)
Operating temperature	-10°C - +50°C
Casing	Stainless-steel (SAE316L)
Protection	IP 68
Dimensions	Ø99 x 10 mm
Weight	0.4 kg

Color of lighting

W	<input type="checkbox"/> cool white
WW	<input type="checkbox"/> warm white
B	<input type="checkbox"/> blue
G	<input type="checkbox"/> green
M	<input type="checkbox"/> <input type="checkbox"/> RGB multi-color
WM	<input type="checkbox"/> <input type="checkbox"/> WGB multi-color
MW	<input type="checkbox"/> <input type="checkbox"/> RGBW multi-color

Beam angle

-	standard
D	wide



Simply...the brightest



SHARK

RENTAL

Underwater Pool LED Lights

Ultra-thin compact surface-mount design.

Single-color light control by using optional momentary switch or optional DMX512 interface LXU01 and PWM dimmer LDU13 with built-in ASTEL protocol.

Multi-color light control with dimming and changing of color of lighting manually or automatically through the complete rainbow spectrum by using optional momentary switch or optional DMX512 interface LXU01 with built-in ASTEL protocol.



- Stainless-Steel Casing
- 12 Power LEDs Design
- Cool White, Warm White, Blue, Green and Multi-Color Lighting
- High Grade Polycarbonate Glass Optical Window
- Vacuum Metalized Reflector
- Remote Control
- Microprocessor Control (network)
- Digital Dimming
- Polarity Protection
- Transient Protection
- Thermal Protection
- Low Power Consumption
- Simple Installation

METEOR LSR1280

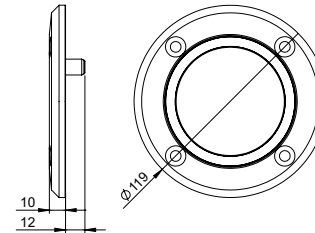
Power supply	12-24 Vdc, max. 1.4 A/12 Vdc or 650 mA/24 Vdc
Beam angle	60° (standard) or 100° (wide)
Optical window	High-grade polycarbonate glass
Luminous flux	max. 1.900 lm (cool white)
Operating temperature	-10°C - +50°C
Casing	Stainless-steel (SAE316L)
Protection	IP 68
Dimensions	Ø119 x 10 mm
Weight	0.6 kg

Color of lighting

W	<input type="checkbox"/>	cool white
WW	<input type="checkbox"/>	warm white
B	<input type="checkbox"/>	blue
G	<input type="checkbox"/>	green
M	<input type="checkbox"/>	RGB multi-color
WM	<input type="checkbox"/>	WGB multi-color

Beam angle

-	standard
D	wide



Simply...the brightest



Underwater Pool LED Lights

Ultra-thin compact surface-mount design.

Single-color light control by using optional momentary switch or optional DMX512 interface LXU01 and PWM dimmer LDU13 with built-in ASTEL protocol.

Multi-color light control with dimming and changing of color of lighting manually or automatically through the complete rainbow spectrum by using optional momentary switch or optional DMX512 interface LXU01 with built-in ASTEL protocol.



- Stainless-Steel Casing
- 36 Power LEDs Design
- Cool White, Warm White, Blue, Green and Multi-Color Lighting
- High Grade Polycarbonate Glass Optical Window
- Vacuum Metalized Reflector
- Remote Control
- Microprocessor Control (network)
- Digital Dimming
- Polarity Protection
- Transient Protection
- Thermal Protection
- Low Power Consumption
- Simple Installation

METEOR LSR36240

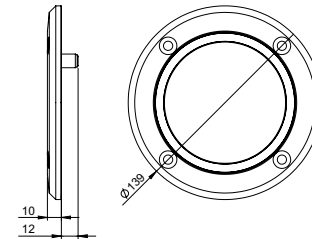
Power supply	12-24 Vdc, max. 4.3 A/12 Vdc or 1.9 A/24 Vdc
Beam angle	60° (standard) or 100° (wide)
Optical window	High-grade polycarbonate glass
Luminous flux	max. 5.700 lm (cool white)
Operating temperature	-10° C - +50° C
Casing	Stainless-steel (SAE316L)
Protection	IP 68
Dimensions	Ø139 x 10 mm
Weight	0.8 kg

Color of lighting

W	<input type="checkbox"/> cool white
WW	<input type="checkbox"/> warm white
B	<input type="checkbox"/> blue
G	<input type="checkbox"/> green
M	<input type="checkbox"/> RGB multi-color
WM	<input type="checkbox"/> WGB multi-color

Beam angle

-	standard
D	wide



Simply...the brightest



Underwater Pool LED Lights

Ultra-thin compact surface-mount design.

Single-color light control by using optional momentary switch or optional DMX512 interface LXU01 and PWM dimmer LDU13 with built-in ASTEL protocol.

Multi-color light control with dimming and changing of color of lighting manually or automatically through the complete rainbow spectrum by using optional momentary switch or optional DMX512 interface LXU01 with built-in ASTEL protocol.



- Stainless-Steel Casing
- 36 Power LEDs Design
- Cool White, Warm White, Blue, Green and Multi-Color Lighting
- High Grade Polycarbonate Glass Optical Window
- Vacuum Metalized Reflector
- Remote Control
- Microprocessor Control (network)
- Digital Dimming
- Polarity Protection
- Transient Protection
- Thermal Protection
- Low Power Consumption
- Simple Installation

METEOR LSR36500

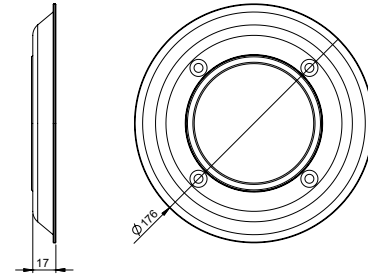
Power supply	24 Vdc, max. 3.4 A
Beam angle	60° (standard) or 100° (wide)
Optical window	High-grade polycarbonate glass
Luminous flux	max. 8.300 lm (cool white)
Operating temperature	-10°C - +50°C
Casing	Stainless-steel (SAE316L)
Protection	IP 68
Dimensions	Ø176 x 17 mm
Weight	2.3 kg

Color of lighting

W	<input type="checkbox"/>	cool white
WW	<input type="checkbox"/>	warm white
B	<input type="checkbox"/>	blue
G	<input type="checkbox"/>	green
M	<input type="checkbox"/>	RGB multi-color
WM	<input type="checkbox"/>	WGB multi-color

Beam angle

-	standard
D	wide



Simply...the brightest



Underwater Pool LED Lights

Modern compact flush-mount design.

Single-color or Multi-color light control with dimming and changing of color of lighting manually or automatically through the complete rainbow spectrum by using optional momentary switch or optional DMX512 interface LXU01 with built-in ASTEL protocol.



- Stainless-Steel Casing
- 32 Power LEDs Design
- Cool White, Warm White, Blue, Green, Red, Multi-Color Lighting
- Tempered Glass Optical Window
- High-Efficiency Lens
- Remote Control
- Microprocessor Control (network)
- Digital Dimming
- Polarity Protection
- Transient Protection
- Thermal Protection
- Low Power Consumption
- Simple Installation

Simply...the brightest

METEOR XP LFR3210

Power supply	12–24 Vdc, max. 9.7 A/12 Vdc or 4.6 A/24 Vdc
Beam angle	31°(standard), 85°(wide), 11°(narrow)
Optical window	Tempered glass 8 mm
Luminous flux	max. 10.000 lm (cool white)
White color temperature	6.000 K
Operating temperature	-10°C - +50°C
Casing	Stainless-steel (316L)
Protection	IP 68
Dimensions	Ø240 x 220 x 64 mm
Weight	4.3kg

METEOR XP LFR3215

Power supply	12–24 Vdc, max. 9.7 A/12 Vdc or 4.6 A/24 Vdc
Beam angle	28°(standard), 85°(wide), 21°(narrow)
Optical window	Tempered glass 8 mm
Luminous flux	max. 15.000 lm (cool white)
White color temperature	6.000 K
Operating temperature	-10°C - +50°C
Casing	Stainless-steel (316L)
Protection	IP 68
Dimensions	Ø240 x 220 x 64 mm
Weight	4.3kg

Color of lighting - METEOR XP LFR3210

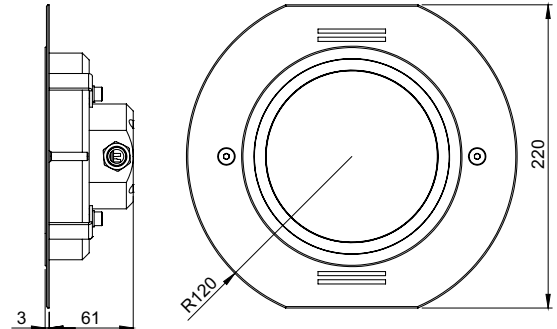
W	<input type="checkbox"/> cool white
WW	<input type="checkbox"/> warm white
B	<input type="checkbox"/> blue
G	<input type="checkbox"/> green
R	<input type="checkbox"/> red
M	<input type="checkbox"/> RGB multi-color
MW	<input type="checkbox"/> RGBW multi-color

Color of lighting - METEOR XP LFR3215

W	<input type="checkbox"/> cool white
WW	<input type="checkbox"/> warm white

Beam angle

-	standard
D	wide
N	narrow





Accessories

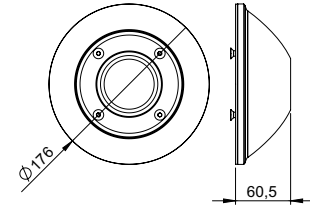
Adapting of METEOR lights to different (existing) PAR56 niches.



PAR56 Adapter LPAR561280

For METEOR LSR1280 series.

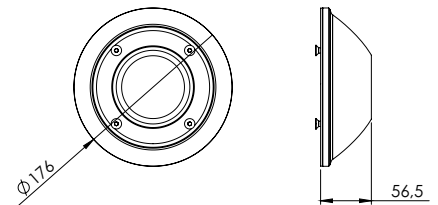
Material	UHMW-PE
Dimensions	Ø176 x 60.5 mm
Weight	0.85 kg



PAR56 Adapter LPAR5636240

For METEOR LSR36240 and LSR36500 series.

Material	UHMW-PE
Dimensions	Ø176 x 56.5 mm
Weight	0.75 kg



- For using with METEOR LSR36240, LSR36500 and LSR1280 series
- Black UHMW-PE Body
- Stainless-Steel Screws and Flange
- Simple Installation



- Mounting of METEOR LSR1280, LSR36240 and LSR36500 series to the standard PAR56 niche

Accessories

Surface-mount installation of METEOR lights.

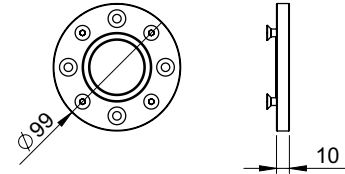


- For using with METEOR series
- Stainless-Steel body
- Stainless-Steel Screws
- Simple Installation

Surface Mount Niche LSMN0640

For METEOR LSR0640 series.

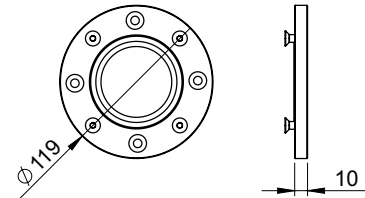
Material	Stainless-steel (SAE316L)
Dimensions	Ø99 x 10 mm
Weight	0.5 kg



Surface Mount Niche LSMN1280

For METEOR LSR1280 series.

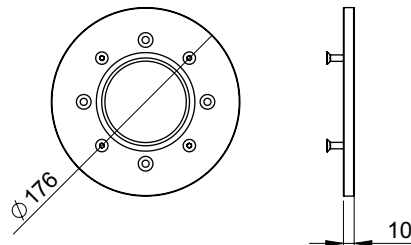
Material	Stainless-steel (SAE316L)
Dimensions	Ø119 x 10 mm
Weight	0.7 kg



Surface Mount Niche LSMN36500

For METEOR LSR36500 series.

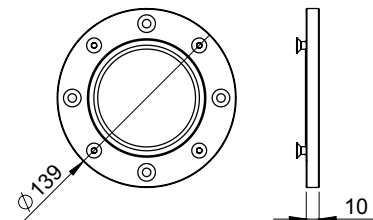
Material	Stainless-steel (SAE316L)
Dimensions	Ø176 x 10 mm
Weight	1.7 kg

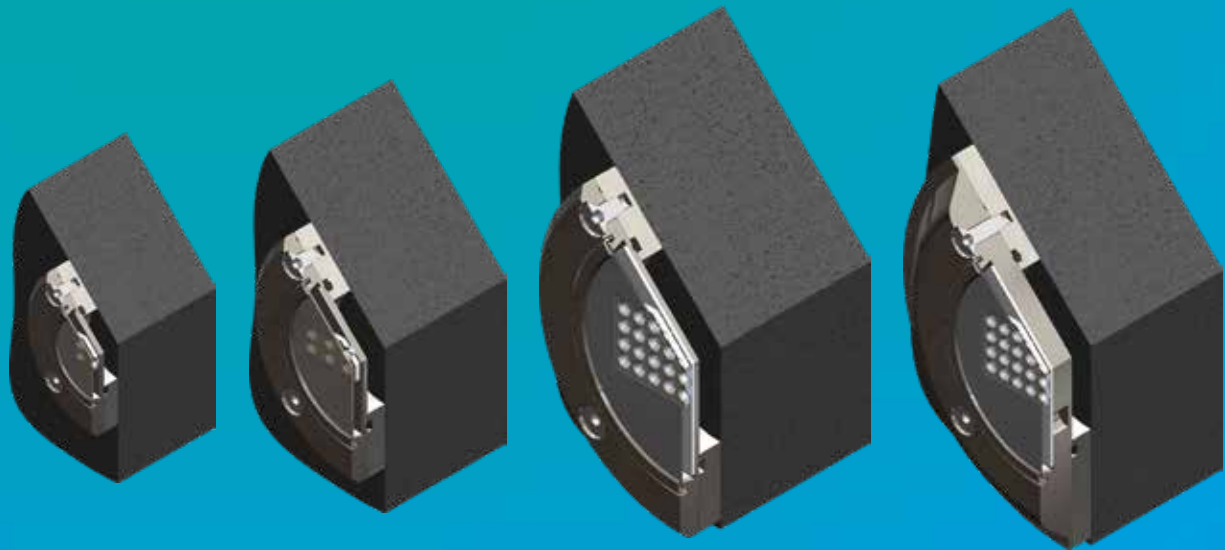


Surface Mount Niche LSMN36240

For METEOR LSR36240 series.

Material	Stainless-steel (SAE316L)
Dimensions	Ø139 x 10 mm
Weight	0.9 kg

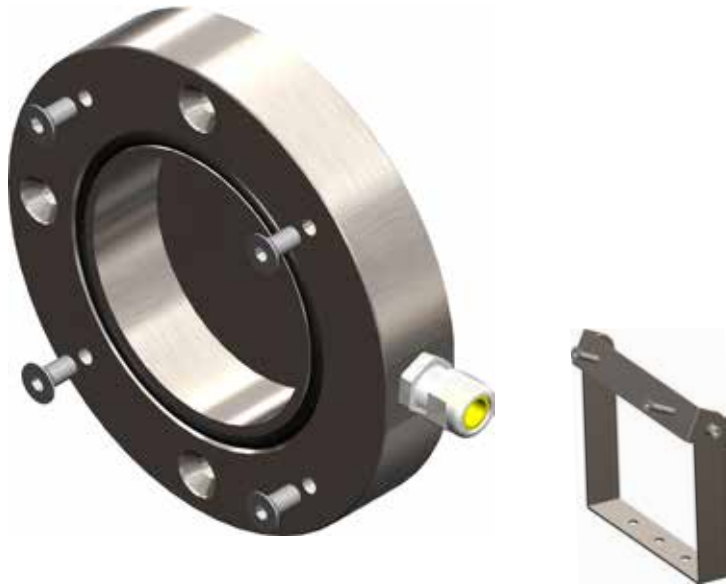




- Surface-mount installation of Meteor series

Accessories

Surface-mount right-angle cable installation of METEOR lights with lighting direction adjustment possibility.

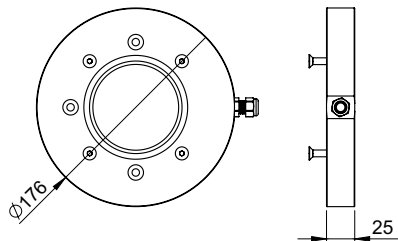


- For using with METEOR series
- Stainless-Steel body
- Stainless-Steel Screws
- PVDF Cable Gland
- Simple Installation

Surface-Mount Right-Angle Niche LRMN36500

For METEOR LSR36500 series.

Material Stainless-steel (SAE316L)
 Dimensions $\text{Ø}176 \times 25 \text{ mm}$
 Weight 4.0 kg



Surface-Mount Right-Angle Niche Accessory LSB36500

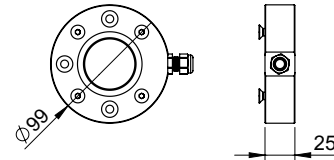
For METEOR LSR36500 series.

Material Stainless-steel (SAE316L)
 Dimensions $155 \times 176 \times 30 \text{ mm}$
 Weight 0.5 kg

Surface-Mount Right-Angle Niche LRMN0640

For METEOR LSR0640 series.

Material Stainless-steel (SAE316L)
 Dimensions $\text{Ø}99 \times 25 \text{ mm}$
 Weight 1.3 kg



Surface-Mount Right-Angle Niche Accessory LSB0640

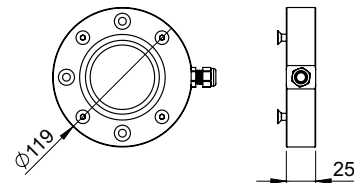
For METEOR LSR0640 series.

Material Stainless-steel (SAE316L)
 Dimensions $107 \times 100 \times 20 \text{ mm}$
 Weight 0.3 kg

Surface-Mount Right-Angle Niche LRMN1280

For METEOR LSR1280 series.

Material Stainless-steel (SAE316L)
 Dimensions $\text{Ø}119 \times 25 \text{ mm}$
 Weight 1.8 kg



Surface-Mount Right-Angle Niche Accessory LSB1280

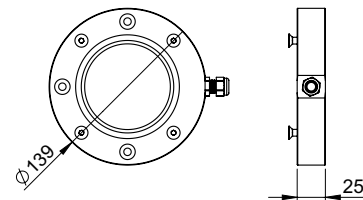
For METEOR LSR1280 series.

Material Stainless-steel (SAE316L)
 Dimensions $117 \times 120 \times 20 \text{ mm}$
 Weight 0.3 kg

Surface-Mount Right-Angle Niche LRMN36240

For METEOR LSR36240 series.

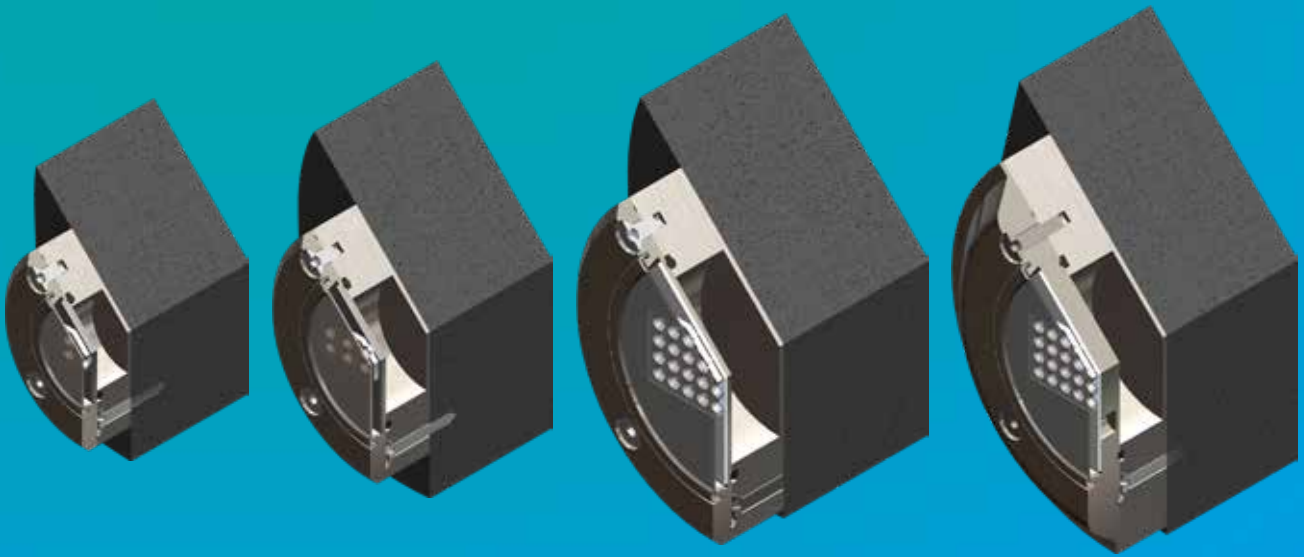
Material Stainless-steel (SAE316L)
 Dimensions $\text{Ø}139 \times 25 \text{ mm}$
 Weight 2.2 kg



Surface-Mount Right-Angle Niche Accessory LSB36240

For METEOR LSR36240 series.

Material Stainless-steel (SAE316L)
 Dimensions $132 \times 140 \times 25 \text{ mm}$
 Weight 0.4 kg



- Surface-mount right-angle cable installation of METEOR series

Accessories

Installation of METEOR lights to concrete pools with ceramic tile finish.

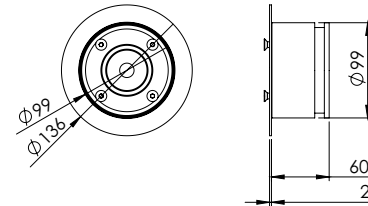


- For using with METEOR series
- Black UHMW-PE Body
- Stainless-Steel Screws and Flange
- Simple Installation

Concrete Pool Niche LCPN0640

For METEOR LSR0640 series.

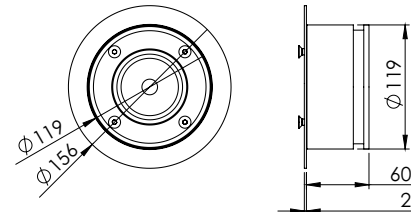
Material UHMW-PE
Dimensions $\varnothing 99 \times 60$ mm
Weight 0.5 kg



Concrete Pool Niche LCPN1280

For METEOR LSR1280 series.

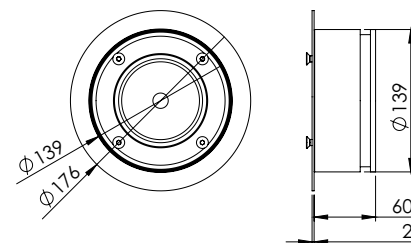
Material UHMW-PE
Dimensions $\varnothing 119 \times 60$ mm
Weight 0.7 kg

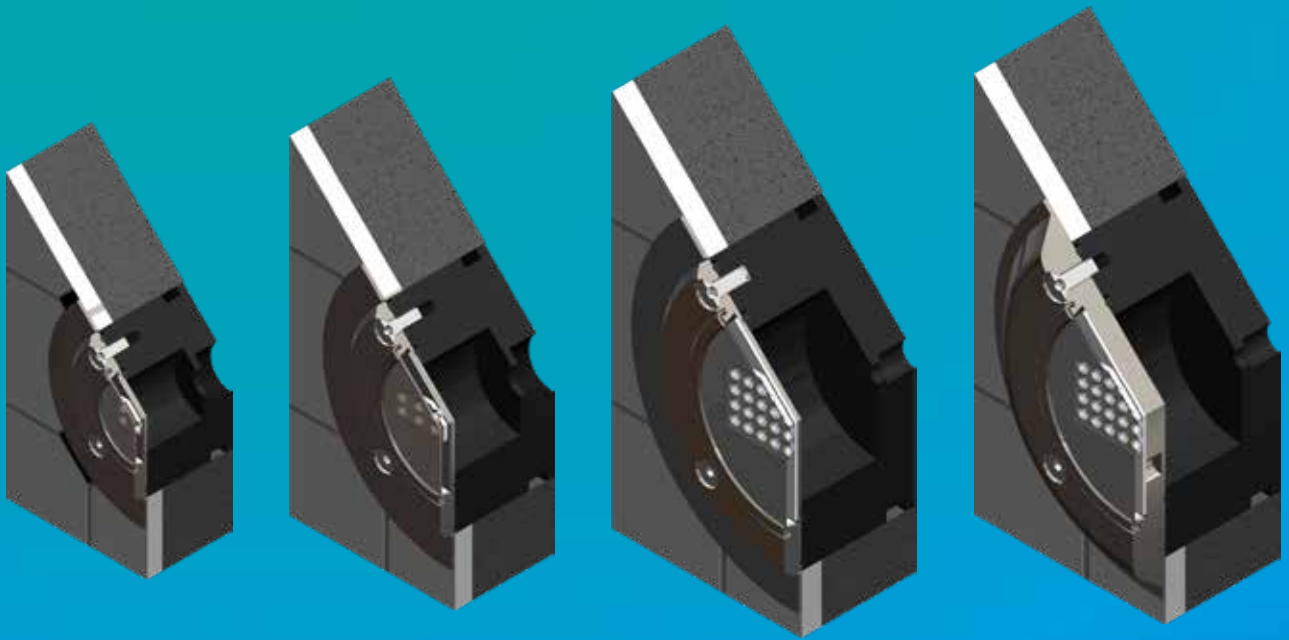


Concrete Pool Niche LCPN36240

For METEOR LSR36240 and LSR36500 series.

Material UHMW-PE
Dimensions $\varnothing 139 \times 60$ mm
Weight 0.9 kg





- Installation of METEOR series to ceramic tile finish pools

Accessories

Installation of METEOR lights to concrete pools with ceramic tile finish aligned with wall surface.

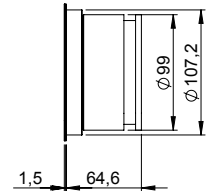
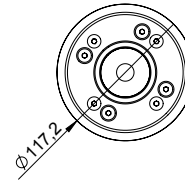


- For using with METEOR series
- Black UHMW-PE Body
- Stainless Steel Flush-Mount Front Lid
- Stainless Steel Screws
- Simple Installation

Concrete Pool Niche LCFN0640

For METEOR LSR0640 series.

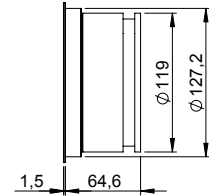
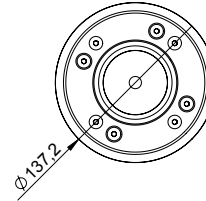
Material	UHMW-PE / Stainless steel (SAE316L)
Dimensions	Ø117.2 x 66.1 mm
Weight	0.8 kg



Concrete Pool Niche LCFN1280

For METEOR LSR1280 series.

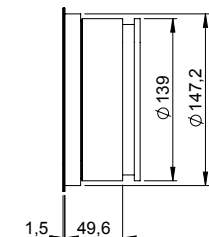
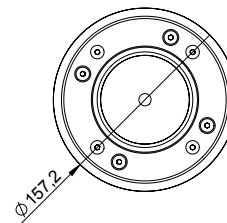
Material	UHMW-PE / Stainless steel (SAE316L)
Dimensions	Ø137.2 x 66.1 mm
Weight	1.1 kg

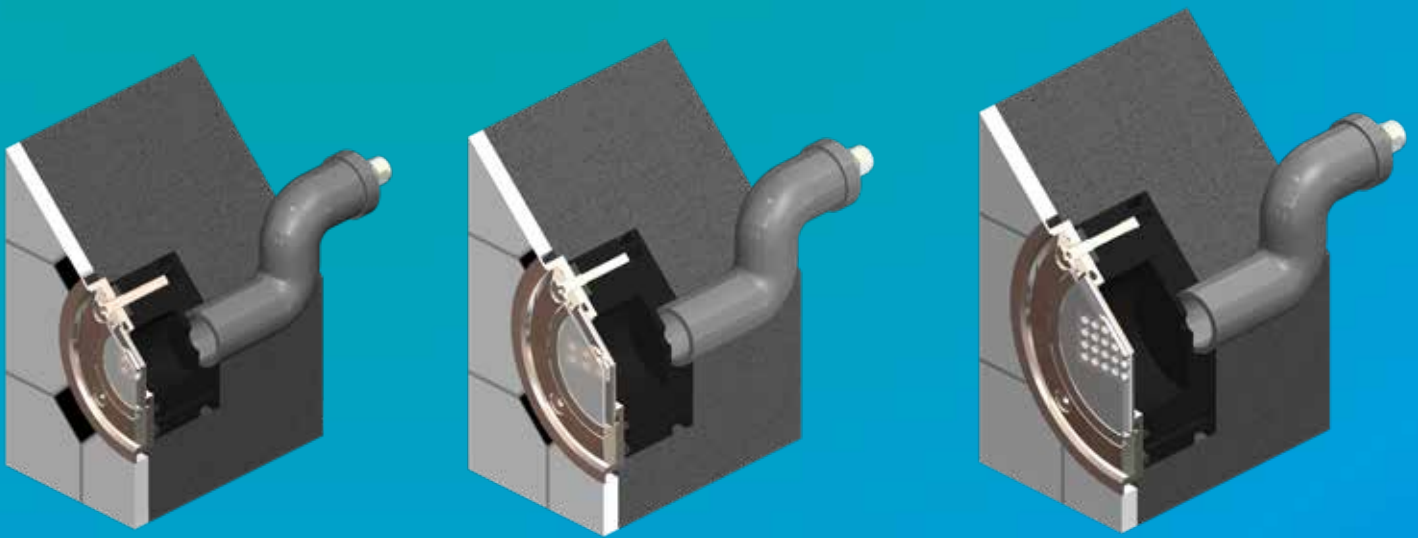


Concrete Pool Niche LCFN36240

For METEOR LSR36240 series.

Material	UHMW-PE / Stainless steel (SAE316L)
Dimensions	Ø157.2 x 66.1 mm
Weight	1.3 kg





- Installation of METEOR series to concrete pools with ceramic tile finish aligned with wall surface

Accessories

Installation of METEOR lights to polyester or liner/concrete pools.

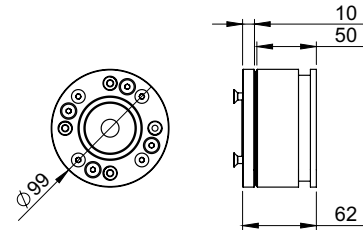


- For using with METEOR series
- Black UHMW-PE Body
- Stainless-Steel Screws and Flange
- Simple Installation

Liner Pool Niche LLPN0640

For METEOR LSR0640 series.

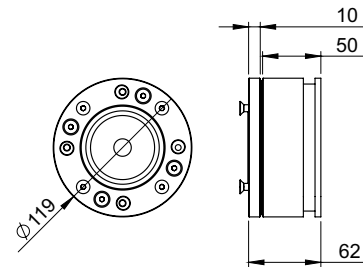
Material UHMW-PE
Dimensions $\varnothing 99 \times 60$ mm
Weight 0.5 kg



Liner Pool Niche LLPN1280

For METEOR LSR1280 series.

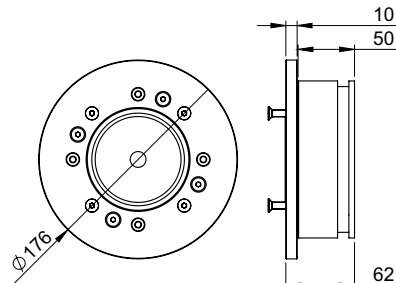
Material UHMW-PE
Dimensions $\varnothing 119 \times 60$ mm
Weight 0.7 kg



Liner Pool Niche LLPN36500

For METEOR LSR36500 series.

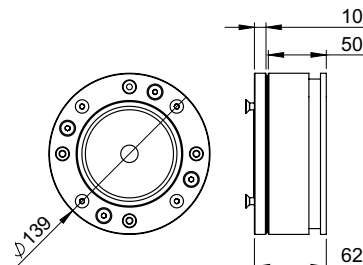
Material UHMW-PE
Dimensions $\varnothing 176 \times 60$ mm
Weight 1.0 kg

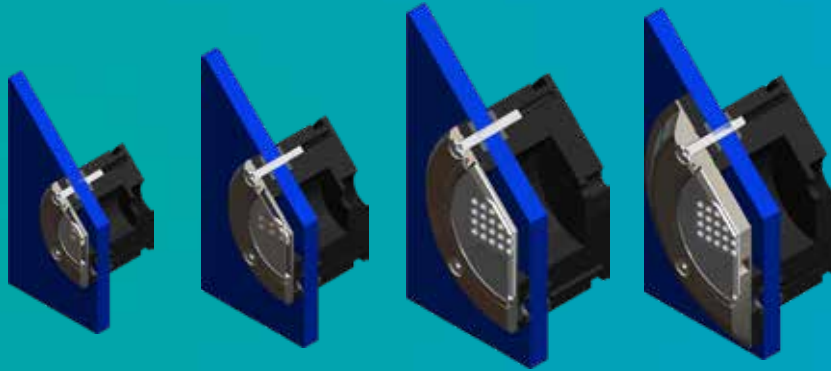


Liner Pool Niche LLPN36240

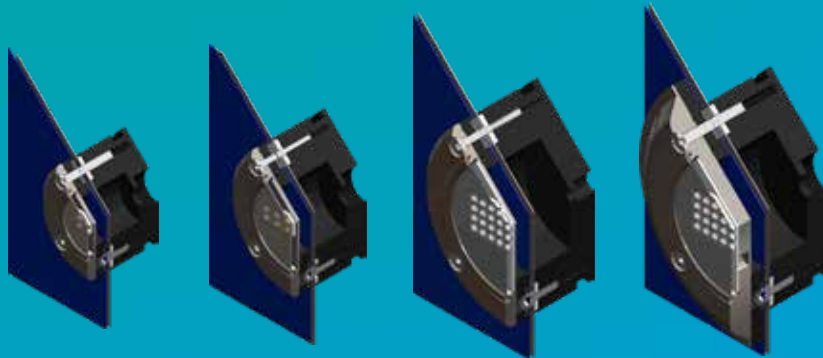
For METEOR LSR36240 series.

Material UHMW-PE
Dimensions $\varnothing 139 \times 60$ mm
Weight 0.9 kg

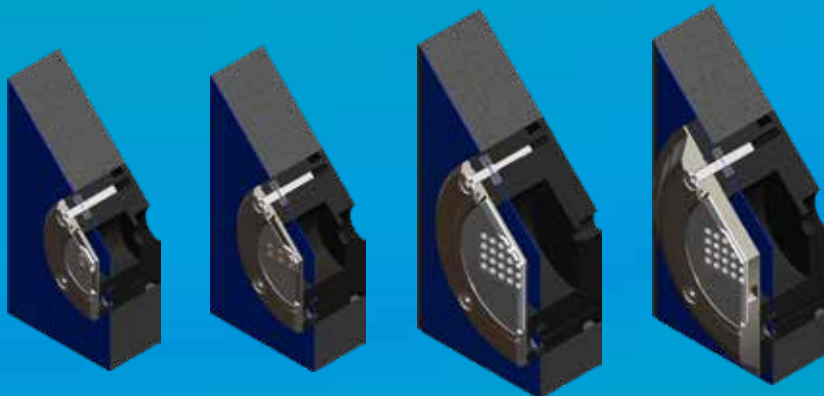




- Installation of METEOR series to polyester pools



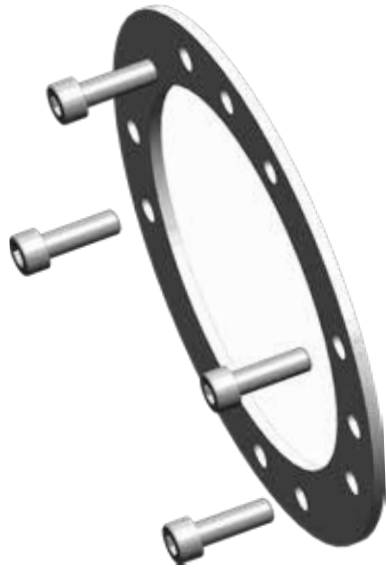
- Installation of METEOR series to liner/stainless-steel pools



- Installation of METEOR series to liner/concrete pools

Accessories

Accessories of LLPN niche series for installation of METEOR lights to liner and liner/stainless-steel pools.



- For using with Liner Pool Niche LLPN series
- Elastomer and Stainless-Steel Body
- Stainless-Steel Screws
- Simple Installation

Liner / Stainless-Steel Pool Niche Accessory LLS0640

For METEOR LSR0640 series.

Material	Elastomer NBR 65 Sh
Dimensions	Ø99 x 4 mm
Weight	0.1 kg

Liner / Stainless-Steel Pool Niche Accessory LLS1280

For METEOR LSR1280 series.

Material	Elastomer NBR 65 Sh
Dimensions	Ø119 x 4 mm
Weight	0.1 kg

Liner / Stainless-Steel Pool Niche Accessory LLS36240

For METEOR LSR36240 and LSR36500 series.

Material	Elastomer NBR 65 Sh
Dimensions	Ø139 x 4 mm
Weight	0.1 kg

Liner Pool Niche Accessory LLR0640

For METEOR LSR0640 series.

Material	Stainless-steel (SAE316L)
Dimensions	Ø99 x 10 mm
Weight	0.6 kg

Liner Pool Niche Accessory LLR1280

For METEOR LSR1280 series.

Material	Stainless-steel (SAE316L)
Dimensions	Ø119 x 10 mm
Weight	0.8 kg

Liner Pool Niche Accessory LLR36240

For METEOR LSR36240 series.

Material	Stainless-steel (SAE316L)
Dimensions	Ø139 x 10 mm
Weight	1 kg

Liner Pool Niche Accessory LLR36500

For METEOR LSR36500 series.

Material	Stainless-steel (SAE316L)
Dimensions	Ø176 x 10 mm
Weight	1.6 kg

Accessories

Surface-mount installation of single-color or multi-color RGB lights.



Gasket LSG0640

For METEOR LSR0640 series.

Material	Elastomer NBR 65 Sh
Dimensions	Ø99 x 4 mm
Weight	0.1 kg

Gasket LSG1280

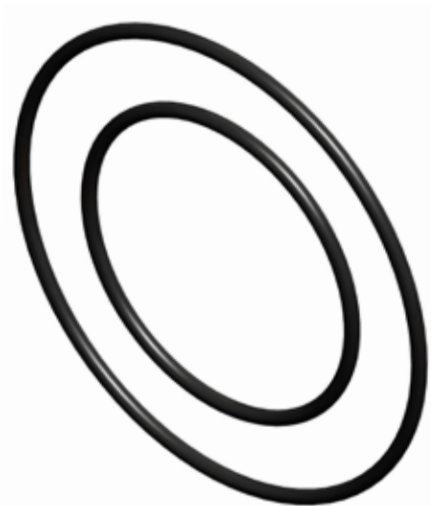
For METEOR LSR1280 series.

Material	Elastomer NBR 65 Sh
Dimensions	Ø119 x 4 mm
Weight	0.1 kg

Gasket LSG36240

For METEOR LSR36240 and LSR36500 series.

Material	Elastomer NBR 65 Sh
Dimensions	Ø139 x 4 mm
Weight	0.1 kg



O-Ring LSO0640

For METEOR LSR0640 series.

Material	Elastomer NBR 70
Dimensions	Ø86 / Ø44 mm
Weight	0.1 kg

O-Ring LSO1280

For METEOR LSR01280 series.

Material	Elastomer NBR 70
Dimensions	Ø108 / Ø63 mm
Weight	0.1 kg

O-Ring LSO36240

For METEOR LSR36240 and LSR36500 series.

Material	Elastomer NBR 70
Dimensions	Ø126 / Ø82 mm
Weight	0.1 kg

- For using with METEOR series
- Simple Installation

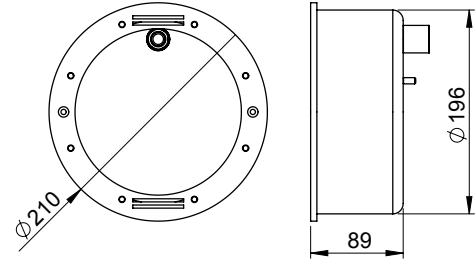
Accessories

Installation of METEOR XP lights to stainless-steel or concrete pools with ceramic tile finish.

Concrete Pool Niche LCPNXP32

For METEOR XP series.

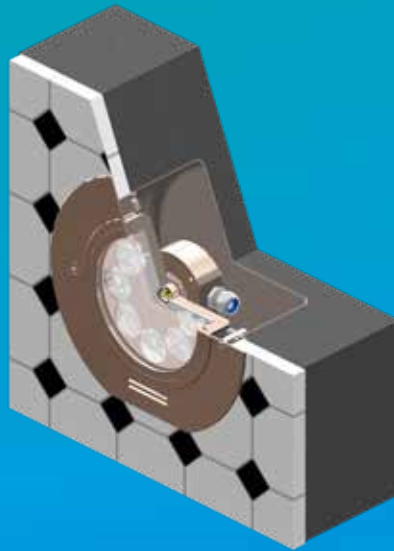
Material	Stainless-steel (SAE316L)
Dimensions	Ø210 x 89 mm
Weight	2.0 kg



- For using with METEOR XP series
- Stainless-Steel Body



- Installation of METEOR XP series to stainless-steel pools



- Installation of METEOR XP series to concrete pools with ceramic tiles finish

Accessories

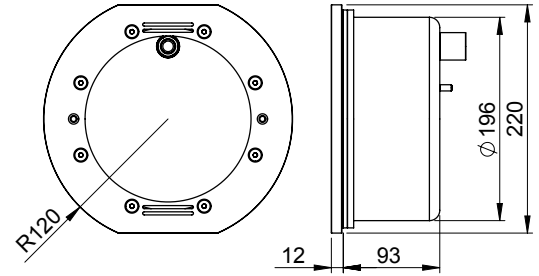
Installation of METEOR XP lights to liner/concrete pools.



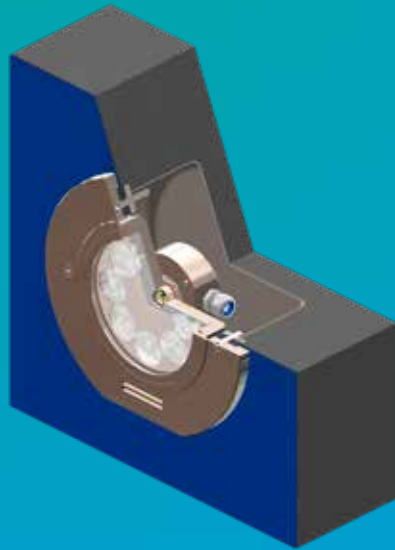
Liner Pool Niche LLPNXP32

For METEOR XP series.

Material	Stainless-steel (SAE316L)
Dimensions	Ø240 x 220 x 105 mm
Weight	3.7 kg



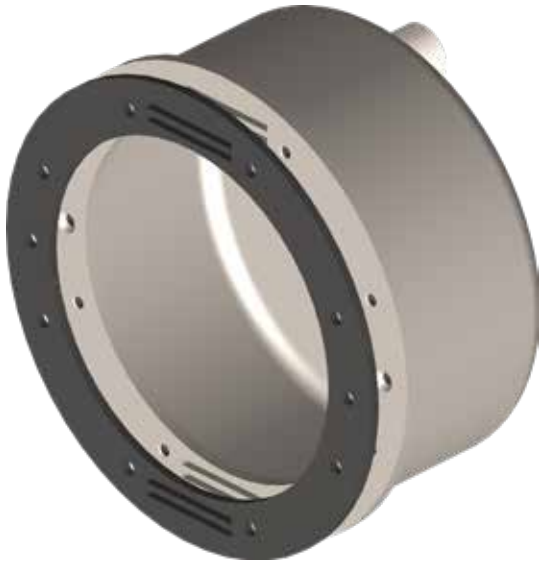
- For using with METEOR XP series
- Stainless-Steel Body
- Stainless-Steel Flange and Screws
- Elastomer Gaskets



- Installation of METEOR XP series to liner/concrete pools

Accessories

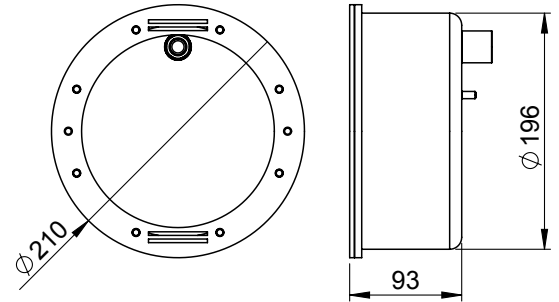
Installation of METEOR XP lights to liner/concrete pools.



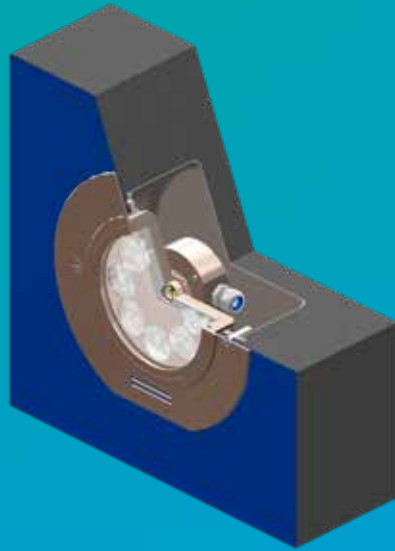
Liner Pool Niche LLGNXP32

For METEOR XP series.

Material	Stainless-steel (SAE316L)
Dimensions	Ø210 x 93 mm
Weight	2.1 kg



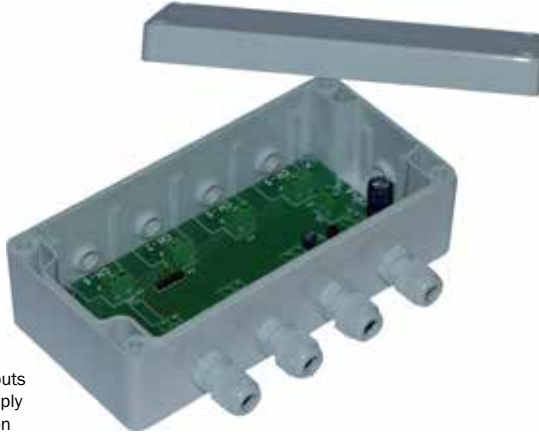
- For using with METEOR XP series
- Stainless-Steel Body
- Elastomer Gasket



- Installation of METEOR XP series to liner/concrete pools

Accessories

Synchronization of color of lighting for complete group of multi-color lights when automatical changing of color of lighting through the complete rainbow spectrum is selected and controlled by using optional momentary switch.

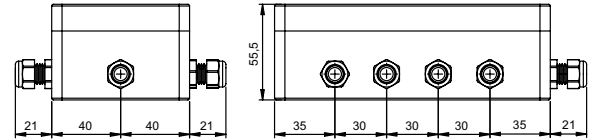


- 8 Synchronization Outputs
- Wide Range Power Supply
- Low Power Consumption
- Polarity Protection
- Transient Protection
- Short Circuit Output Protection
- Simple Installation

Synchronization Unit LSU08

For multi-color RGB METEOR series.

Input voltage	12-24 Vdc
Consumption	max. 10 mAdc
Operating temperature	-10°C - +50°C
Casing	ABS
Protection	IP 65
Dimensions	max. 181x122x55.5mm
Weight	0.3 kg



Dimming of single-color lights or group of lights by using optional momentary switch. Built-in ASTEL protocol to control single-color lights or group of lights by using optional DMX512 interface LXU01.

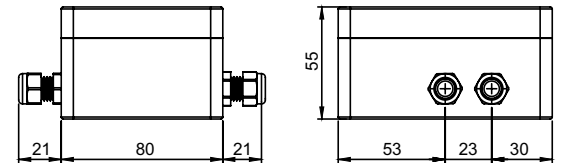


- 3 Control Outputs
- Adjustable PWM Frequency
- Wide Range Power Supply
- Low Power Consumption
- Polarity Protection
- Transient Protection
- Short Circuit Output Protection
- Simple Installation

PWM Dimmer LDU13

For single-color METEOR series.

Input voltage	12-24 Vdc
Consumption	max. 10 mAdc
ASTEL protocol default address	1
Operating temperature	-10°C - +50°C
Casing	ABS
Protection	IP 65
Dimensions	max. 106x122x55.5mm
Weight	0.2 kg



Accessories

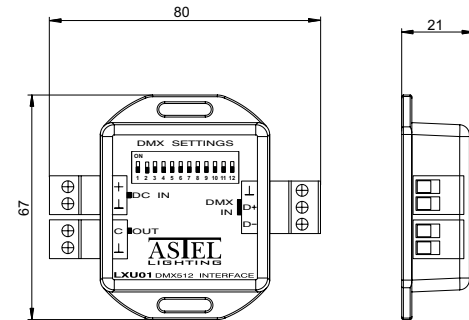
DMX512 to ASTEL protocol multi-light converter to control single-color or multi-color light or one group of lights with built-in ASTEL protocol.



- 1 Control Output
- DIP-switch Programmable
- Multi - Speed Mode
- Wide Range Power Supply
- Low Power Consumption
- Polarity Protection
- Transient Protection
- Short Circuit Output Protection
- Simple Installation

DMX512 Interface LXU01

Input voltage	12-24 Vdc
Consumption	max. 50 mAdc
Operating temperature	-10°C - +50°C
Casing	ABS
Dimensions	max. 67x80x21mm
Weight	0.1 kg



Notes



ASTEL
LIGHTING

ASTEL d.o.o. • Dutovlje 138 • 6221 Dutovlje • Slovenia • www.astel-lighting.com
info@astel-lighting.com • Tel.: +386 5 7310771 • Fax: +386 5 7310789